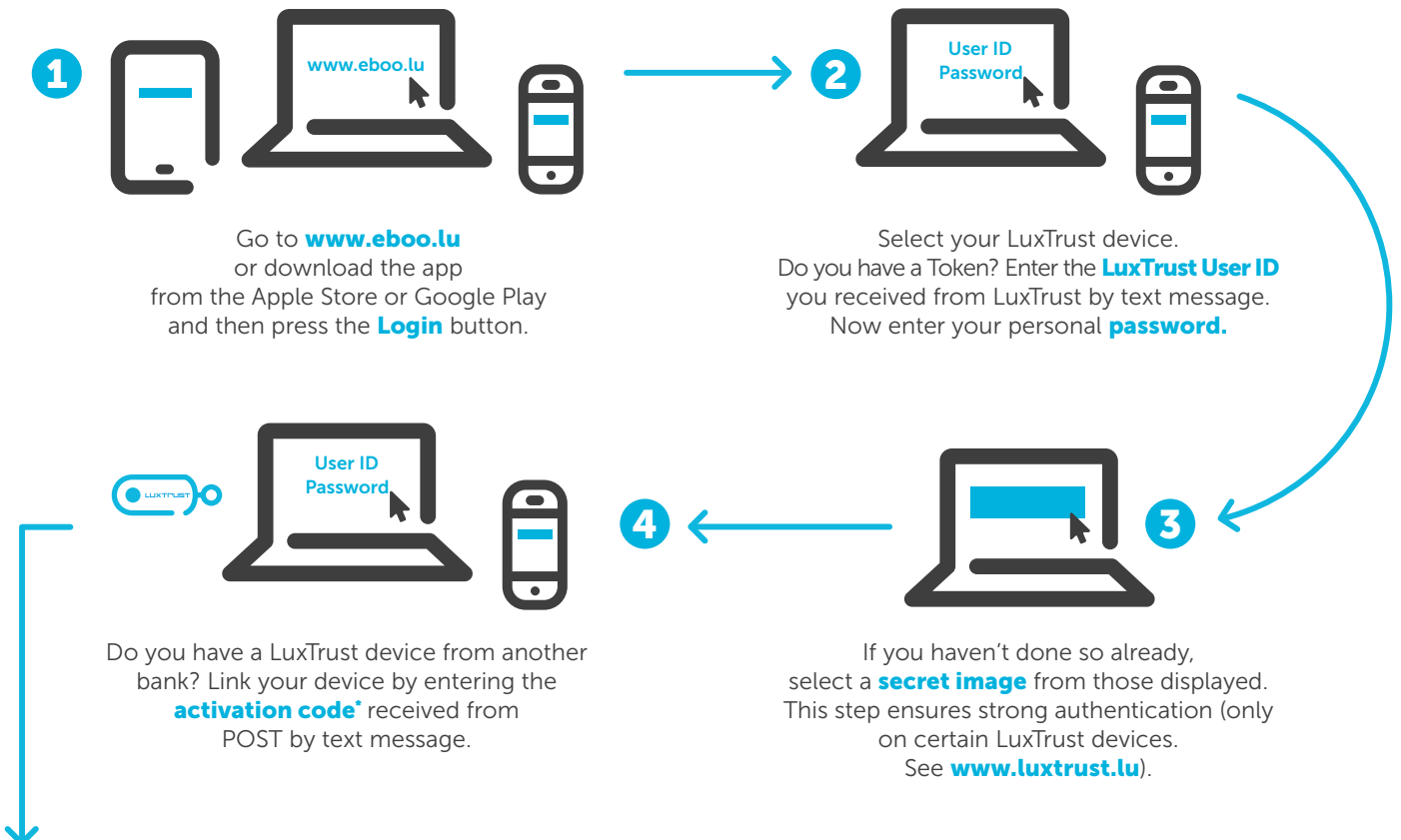


Logging in to eboo couldn't be easier!

If you are connected to the internet AND have a LuxTrust device that has already been activated and/or used (MyGuichet, eBanking at another bank, etc.), you only need to follow the login instructions below.

If you are connected to the internet AND have just ordered a new LuxTrust Token from POST, activate your Token first by following the instructions overleaf and then follow the login guide below.

Welcome to eboo: login



You're all set! Welcome to eboo, the customisable eBanking solution from POST. Activate eboo using your fingerprint or facial recognition by configuring simplified login.

Depending on which smartphone you have, you can log in to eboo using Face ID, Touch ID or a password. Logging in is a breeze!

All the information you need can be found at www.post.lu/eboo

Any questions? **Contact POST Finance:**

- Via eboo secure messaging.
- By calling **8002 8004**, Monday to Friday from 08:00 to 18:00 (+352 2462 8004 from abroad, paid service).
- By emailing contact.finance@post.lu



*The activation code was sent to you by text message following an in-store eboo subscription application; it is valid for 10 days. If this code is no longer valid, call us on 8002 8004. Have you entered your activation code five times unsuccessfully? Please wait an hour before trying again.

eboo login and activation guide

You're in safe hands with LuxTrust: getting started with your Token

You only need to follow this LuxTrust activation procedure once, after you receive your Token by post.

Before you start, you'll need:



Your LuxTrust Token



Your LuxTrust codes*

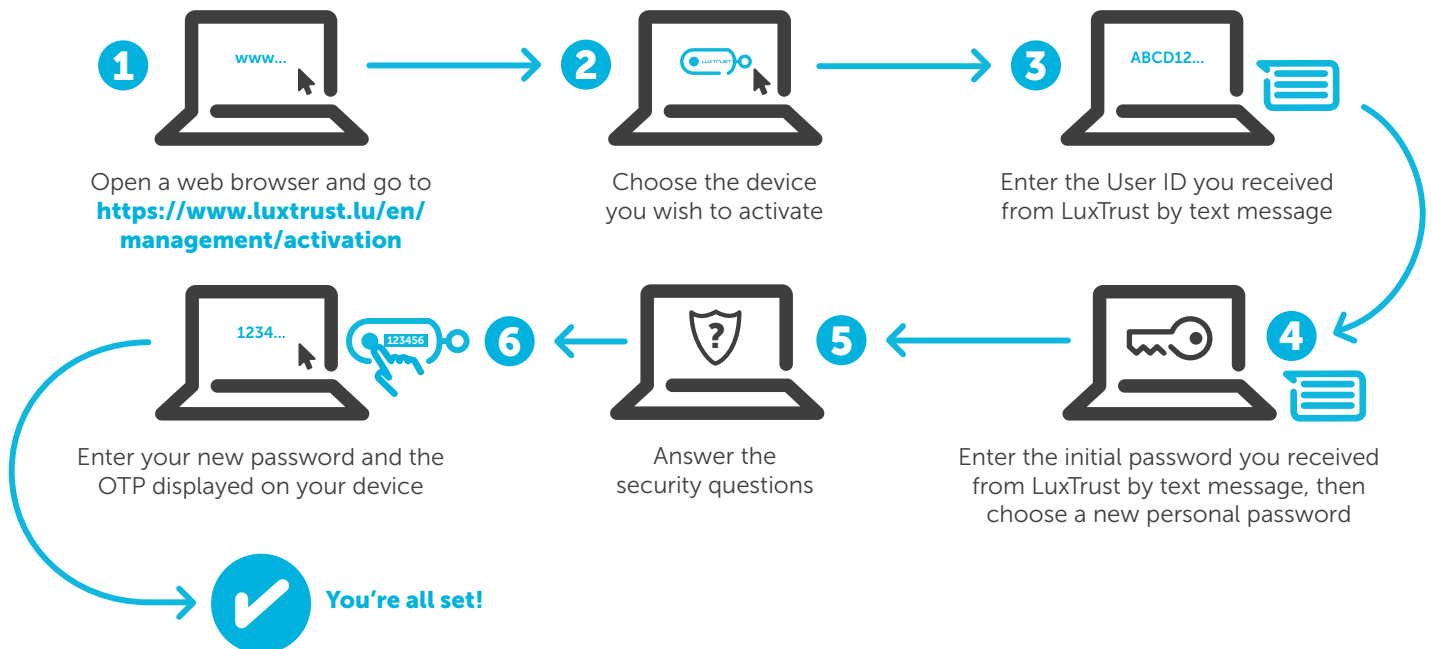
User ID, password and access codes sent by LuxTrust via text message and email



An internet connection

via your smartphone, tablet or computer.

How to activate your Token



How to use your LuxTrust Token



Enter your User ID and password

With your Token, you will be able to carry out transactions and log into the websites of the various LuxTrust partners. But first, you need to enter your User ID and password.



Enter the OTP

Next, you need to enter the OTP (One-Time Password) that appears when you press the button on your Token.



Login

Congratulations! Now you're ready to activate eboo.

Any questions? **Contact our LuxTrust partner!**

By calling **+352 2455 0550**, Monday to Friday from 08:00 to 18:00. By emailing info@luxtrust.lu

* Tip: keep your LuxTrust access codes in a safe place until your device expires.