

# BAMBOO

## DO-IT-YOURSELF

Quick guide



TV

**You need help?**

Contact Center: 8002 8004

Rapid and effective service, 24/7

169



## ADD DECODER



### TIP: Home Check app

Do you want to use the digital version to be assisted with the installation step by step? Just go to the free **Home Check app**.

This intuitive app offers you many benefits after the installation phase as well.

Available in 4 languages:



## Step 1: Wait for confirmation by SMS



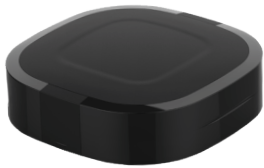
## IMPORTANT



Dear BAMBOO customer,  
Don't start the installation until you have received your SMS confirmation, as this is the only way to avoid disruption to your services.

- Have you received confirmation by SMS? If so, you may begin with the installation.
- If you haven't received an SMS confirmation within 24 hours, please contact our toll-free assistance number on **8002 8004**.

## Step 2: Unpack decoder and accessories to check if all contents are present



Decoder  
(PostTV Box)



Remote control



HDMI cable



Power adapter

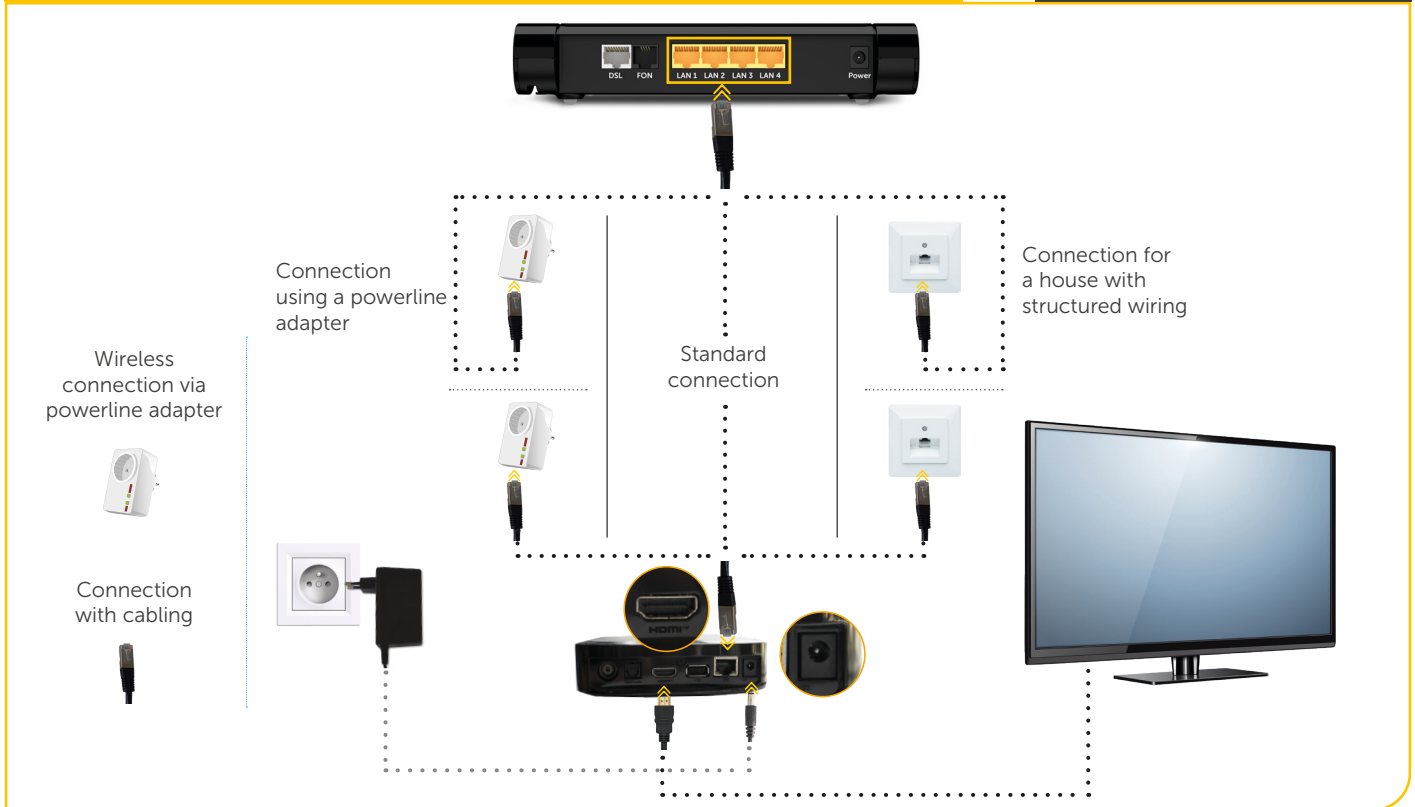


Network cable



Wait for confirmation by SMS

### Step 3: Connect HomeServer to the decoder using the network cable



## Step 4: Register decoder

After all the cable connections and power supplies have been connected you can set up and register your decoder.

1. Turn on your TV and select as source (SOURCE) the HDMI input to which the decoder is connected.
2. Turn the decoder on by aiming the remote control at the decoder and holding down the "On/Off" button.
3. Follow the instructions on your screen to configure your decoder for choice of language, protection of minors, etc.
4. After you have finished adjusting these settings, restart the decoder.
5. After the restart, you can enter your login information, which you received by SMS.



**You need help?**

Contact us on our toll free number **8002 8004**.

The PostTV Go app is included in the **WATCH L** and **WATCH XL** services of BAMBOO!

## Step 5: Download PostTV Go app

With the PostTV Go app, you can watch TV on your smartphone or tablet, record programmes remotely or use the Replay feature from anywhere in Europe.

Download the app in your store then enter your access data, which can be found under the "Information" section in the "MyTV" menu of your decoder.



## GOOD TO KNOW

PostTV adapts to your daily routine



### 7 DAYS REPLAY

Watch your TV programme up to 7 days after broadcast.



### START-OVER

With the Start-over function you can easily go back to the beginning of an active broadcast.



### DIRECT CONTROL

With the *pause, back* and *forward* functions, you can even control live broadcasts.



### RECORDING

Record up to 400 hours of programmes from home or remotely.



### SWIPE

Send the broadcast you are watching on your smartphone or tablet right to your TV with a simple swipe.

These practical functions are included in the **WATCH L** and **WATCH XL** services of BAMBOO!

# NEED HELP WITH YOUR INSTALLATION?

8002 8004

Online help



Home Check



POST Telecom Shop  
Espace POST

